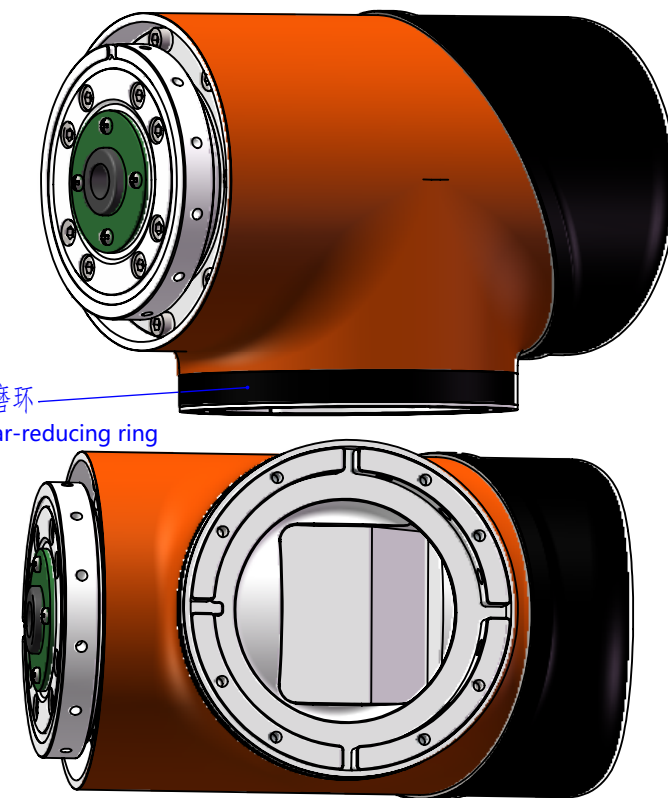
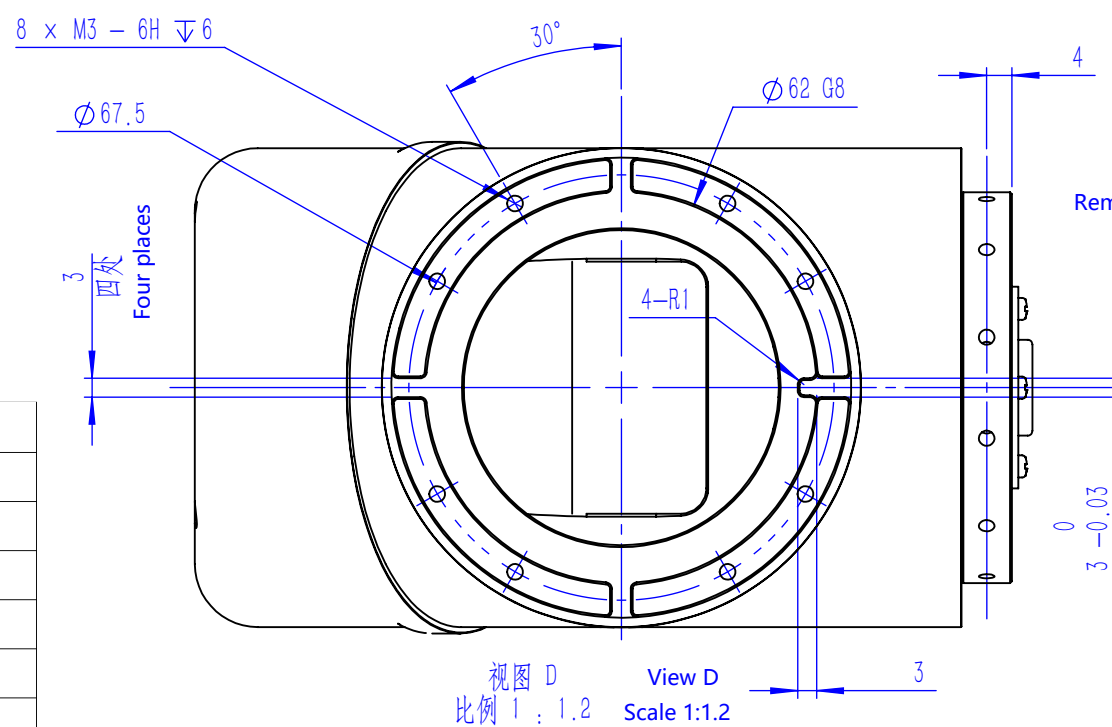
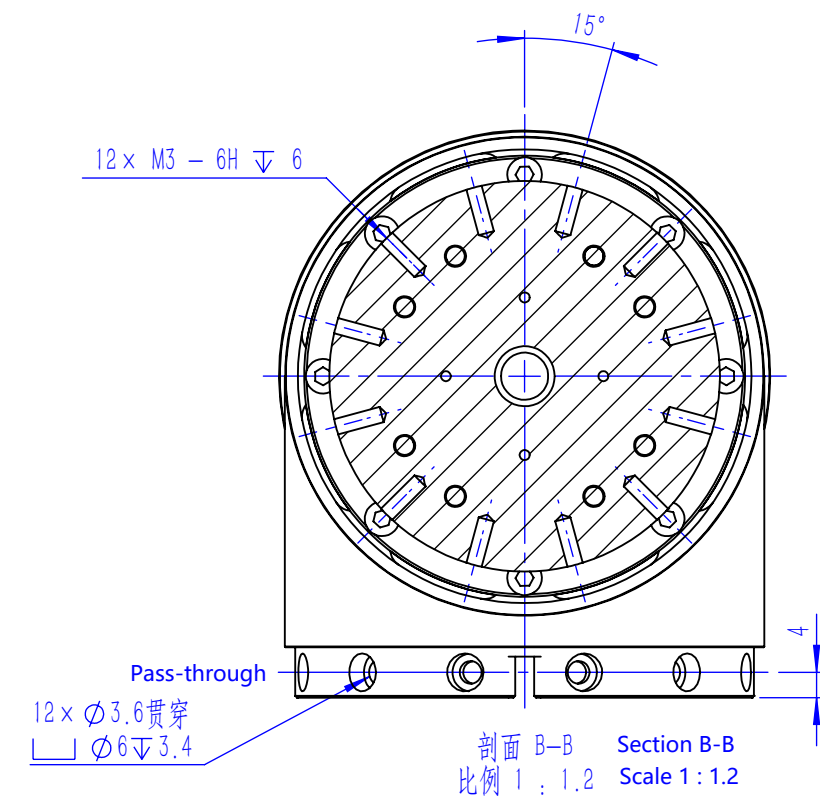
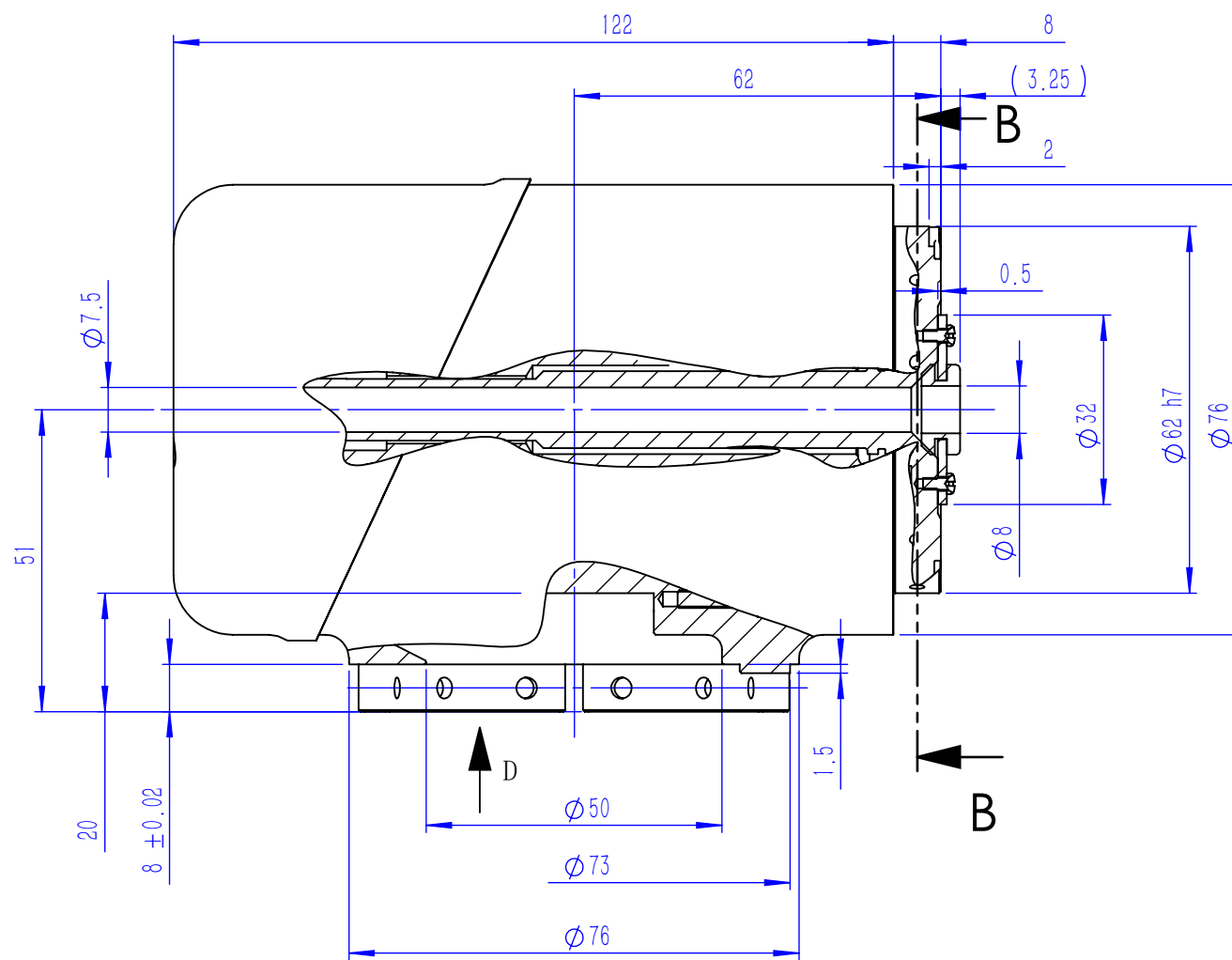
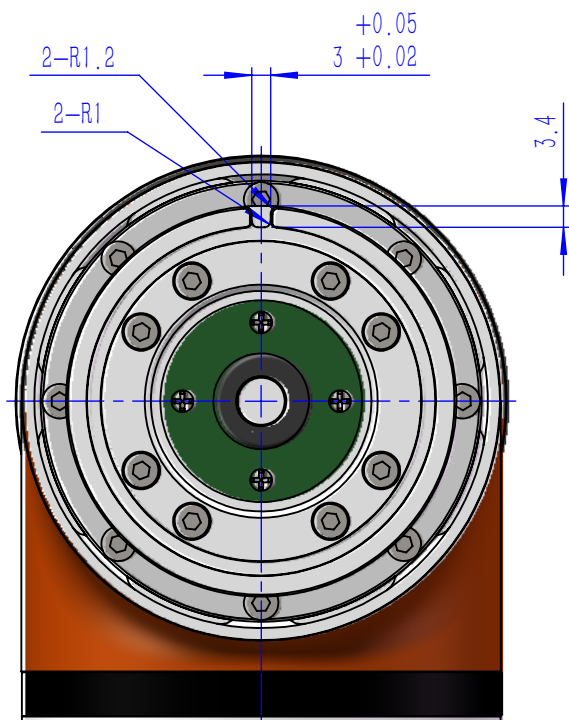


3211401-000000-002



可拆卸弹性环、减磨环
Removable elastic ring, wear-reducing ring

| 机械参数 Mechanical Parameters | 单位 Units | 数值 Values |
|--|-------------|--------------|
| 减速器速比 Reducer Ratio | — | 101 |
| 减速器背隙 Reducer Backlash | arcsec | 10 |
| 转动精度 Rotational Accuracy | arcmin | 1 |
| 平均负载转矩 Average Load Torque | N·m | 13.5 |
| 启停容许转矩 Start/Stop Allowable Torque | N·m | 34 |
| 静态负载转矩 Static Load Torque | N·m | 23.7 |
| 最大瞬时转矩 Maximum Instantaneous Torque | N·m | 66 |
| 最大许用弯矩 Maximum Permissible Bending Moment | N·m | 41 |
| 最大瞬时弯矩 Maximum Momentary Bending Moment | N·m | 80 |
| 额定转速 Rated Speed | rpm | 30 |
| 最大转速 Maximum Speed | rpm | 45 |
| 关节重量 Joint Weight | kg | 1.6 |
| 关节直径 Joint Diameter | mm | 76 |
| 关节长度 Joint Length | mm | 122 |

| 电气参数 Motor Parameters | 单位 Units | 数值 Values |
|---|-------------|---|
| 极对数 Number of Poles | — | 10 |
| 额定功率 Rated Power | W | 178 |
| 额定电压 Rated Voltage | VDC | 48 |
| 额定电流 Maximum Power | Arms | 4.8 |
| 额定转速 Rated Speed | rpm | 3500 |
| 额定转矩 Rated Torque | N·m | 0.5 |
| 转矩常数 Torque constant | N·m/A | 0.117 |
| 线反电动势 Back Electromotive Force Coefficient | V/krpm | 7.1 |
| 抱闸 Brake | — | 24/12VDC电磁摩擦片式 24/12VDC Electromagnetic Friction Plate |
| 输出端反馈 Output feedback | — | 17bit单圈绝对值 17-bit single-turn absolute value |
| 电机反馈 Motor feedback | — | UVW霍尔+20000P/R增量编码器 UVW Hall + 20000 P/R Incremental Encoder |
| 通讯接口 Communication Interface | — | EtherCAT/CANopen |

技术说明

1. 紧固螺钉需采用12.9级或以上螺钉并按标准拧紧;
2. 支持OEM客户定制。

Technical Description

1. Use screws of Class 12.9 or higher and tighten according to standard specifications
2. Supports OEM customization

TR 泰科机器人
TECH ROBOTS

☎ 400-856-5198

✉ sales@techsoft-robots.com

🌐 www.techsoft-robots.com