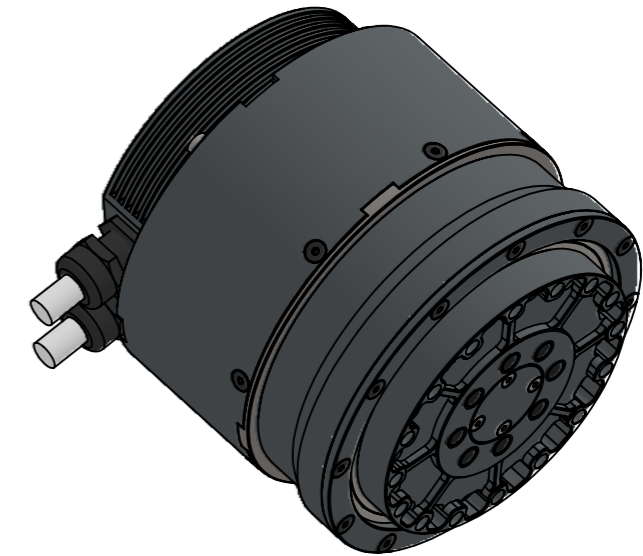
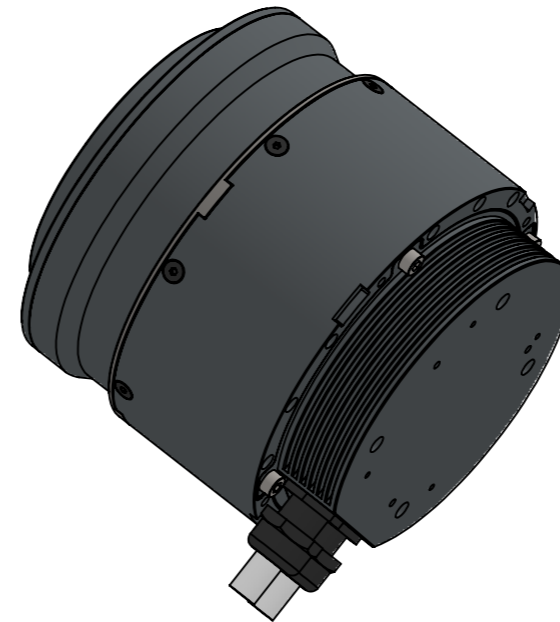


Evenly Distributed Output Flange Axial Mounting Screw Holes

| 机械参数 Mechanical Parameters | 单位 Units | 数值 Values |
|--|-------------|--------------|
| 减速器速比 Reducer Ratio | — | 50 |
| 减速器背隙 Reducer Backlash | arcsec | ≤ 30 |
| 转动精度 Rotational Accuracy | arcmin | 1 |
| 平均负载转矩 Average Load Torque | N·m | 68 |
| 启停容许转矩 Start/Stop Allowable Torque | N·m | 180 |
| 最大瞬时转矩 Maximum Instantaneous Torque | N·m | 230 |
| 额定转速 Rated Speed | rpm | 60 |
| 最大转速 Maximum Speed | rpm | 100 |
| 关节重量 Joint Weight | kg | < 1.45 |
| 关节直径 Joint Diameter | mm | 96 |
| 关节长度 Joint Length | mm | 95 |

| 电气参数 Motor Parameters | 单位 Units | 数值 Values |
|-----------------------------------|--------------------|---|
| 极对数 Number of Poles | — | 20 |
| 额定功率 Rated Power | W | 750 |
| 最大功率 Rated Voltage | W | 1500 |
| 额定电压 Rated Voltage | VDC | 48 |
| 额定电流 Maximum Power | Arms | 28 |
| 额定转速 Rated Speed | rpm | 6250 |
| 额定转矩 Rated Torque | N·m | 1.5 |
| 峰值扭矩 Peak Torque | N·m | 4 |
| 电机位置反馈 Motor Position Feedback | — | 17/16位多圈绝对值 (电池供电) 17/16-bit multi-turn absolute value (battery-powered) |
| 通讯接口 Communication Interface | — | CANopen |
| 存储温度 Storage Temperature | $^{\circ}\text{C}$ | -50 ~ 90 |



技术说明

1. 紧固螺钉需采用12.9级或以上螺钉并按标准拧紧;

Technical Description

1. Fastening screws are to be Grade 12.9 or above and tightened to standard;



400-856-5198

sales@techsoft-robots.com

www.techsoft-robots.com